



Catalog #: _____ Project: _____

Prepared By: _____ Date: _____ Type: _____

Traditional Wall Light Small (TSWP)

Wall Light



OVERVIEW

Lumen Package	2,000
Wattage Range	20
Efficacy Range (LPW)	112
Weight lbs (kg)	6.6 (3.0)

QUICK LINKS

[Ordering Guide](#)[Performance](#)[Photometrics](#)[Dimensions](#)

FEATURES & SPECIFICATIONS

Construction

- Polycarbonate housing provides proven environmental protection for LED modules
- Traditional fixture design provides a familiar look and standard installation requirements.
- Retaining this look allows the ability to upgrade fixtures gradually, while retaining the same overall fixture appearance throughout a facility.
- Patent pending thermal stacking technology system features a unique internal design that allows for lower operating temperatures which results in a brighter, whiter light, more stable color and longer LED and driver life.
- LEDs manufactured for the TSWP series utilize Epoxy Guard conformal coating which reduces the chance of board corrosion.
- Weight: 6.6 lbs in carton.

Optical System

- Lens assembly is designed to provide high efficiency and to target the light where needed to satisfy outdoor lighting requirements.
- Positioning of the LEDs result in the light being directed to desired locations eliminating glare and offensive light.
- Available in 5000K and 4000K color temperatures per ANSI C78.377.
- Minimum CRI of 80.

Electrical

- 0-10V dimming (10% - 100%) standard.
- Standard Universal Voltage (120-277 VAC) Input 50/60 Hz
- Total harmonic distortion: <20%
- Operating temperature: -40°C to +40°C (-40°F to +104°F).
- Power factor: >0.90
- Components are fully encased in potting material for moisture resistance. Driver complies with FCC standards. Driver and key electronic components can easily be accessed.
- Minimum 2.5kV surge rating.

Controls

- Optional factory installed electronic button photocontrol (apertures for field install).

Installation

- Fixture retains the same knock-out sizes and positions as previous models, reducing wiring costs.

Warranty

- LSI luminaires carry a 5-year limited warranty. Refer to <https://www.lsicorp.com/resources/terms-conditions-warranty/> for more information.
- 1 Year warranty on optional button photocell.
- 1 Year warranty on optional Battery Back Up. Test regularly in accordance with local codes.

Listings

- Listed to UL 1598 and UL 8750.
- CSA Listed.
- Meets Buy American Act requirements.
- RoHS Compliant.
- Suitable for wet locations.





Traditional Wall Light Small (TSWP)

ORDERING GUIDE

[Back to Quick Links](#)TYPICAL ORDER EXAMPLE: **TSWP 2L UNV 40 BZA PCI12**

Family	Lumen Package*	Voltage	Dimming	Color Temperature	Finish	Controls
TSWP LED - Traditional Wall Light Small	2L - 2,000 Lumens	UNV - Universal Voltage (120-277V)	DIM - Dim to 10% (0-10V)	50 - 5,000K CCT - 80 CRI	BZA - Bronze	PCI120 - 120V Button Photocell
				40 - 4,000K CCT - 80 CRI		PCI208-277 - 208-277V Button Photocell

PERFORMANCE

DELIVERED LUMENS											
Lumens	CRI	3000K			4000K			5000K			Wattage
		Delivered Lumens	Efficacy	BUG Rating	Delivered Lumens	Efficacy	BUG Rating	Delivered Lumens	Efficacy	BUG Rating	
2L	80	2283	112	B1-U3-G2	2285	112	B1-U3-G2	20	132	B1-U4-G3	38

ELECTRICAL DATA*						
Lumens	120V	208V	240V	277V	347V	480V
2L	0.17	0.10	0.09	0.07	0.11	0.08

*Electrical data at 25C (77F). Actual wattage may differ by +/-10%.

ENERGY SAVINGS					
LED		HID			
Wattage	Annual Cost	Source Wattage	Total Wattage Used	Annual Cost	Annual Savings
20	\$9	50	72	\$52	\$43
		70	90	\$59	\$50
		100	129	\$77	\$68





Traditional Wall Light Small (TSWP)

PHOTOMETRICS

[Back to Quick Links](#)

Luminaire photometry has been conducted by an accredited laboratory in accordance with IESNA LM-79. As specified by IESNA LM-79 the entire luminaire is tested as the source resulting in a luminaire efficiency of 100%.

TSWP 2L UNV 40

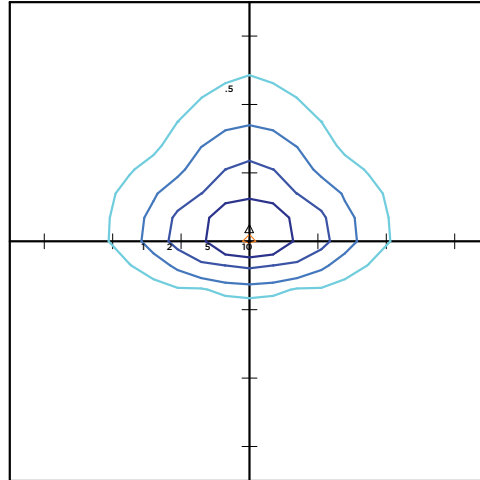
LUMINAIRE DATA

Type 4 Distribution	
Description	4000 Kelvin, 70 CRI
Delivered Lumens	2,283
Watts	20
Efficacy	112
IES Type	Type IV - Very Short
BUG Rating	B1-U3-G2

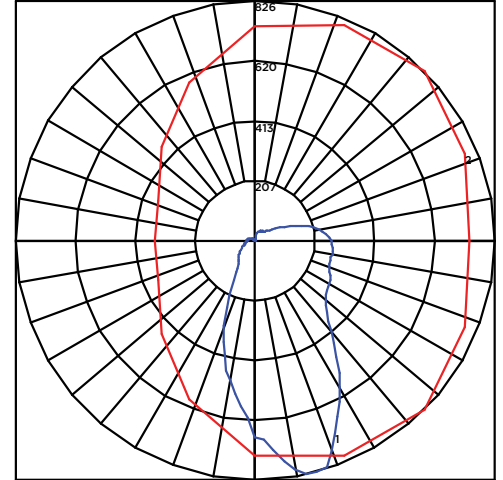
Zonal Lumen Summary

Zone	Lumens	%Luminaire
Low (0-30)°	440	19%
Medium (30-60)°	669	29%
High (60-80)°	494	22%
Very High (80-90)°	232	10%
Uplight (90-180)°	449	20%
Total Flux	2283	100%

ISO FOOTCANDLE



POLAR CURVE



10' Mounting Height/10' Grid Spacing

■ 5 FC ■ 2 FC ■ 1 FC ■ .5 FC





Traditional Wall Light Small (TSWP)

PRODUCT DIMENSIONS

[Back to Quick Links](#)

