



Catalog # : _____ Project : _____

Prepared By : _____ Date : _____

Large Commerical Wall (SLW)

LED Wall Light



IP65



OVERVIEW

Lumen Output Range	14,000 - 20,000
Wattage Range	104 - 156
Efficacy Range (LPW)	123 - 138
Weight lbs(kg)	10 (4.5)

QUICK LINKS

[Ordering Guide](#)[Performance](#)[Photometrics](#)[Dimensions](#)

FEATURES & SPECIFICATIONS

Construction

- Rugged die-cast aluminum housing for maximum durability and reliability.
- IP65 rated luminaire protects integral components from harsh environments.

Optical System

- Premium engineered IP65 rated polycarbonate optic assemblies deliver IES Type 3 or 4 (FT) distributions.
- Zero Uplight.
- Available in 5000K & 4000K color temperatures per ANSI C78.377.
- Minimum CRI of 70.

Electrical

- High-performance driver features short-circuit and over temperature protection with integral surge protection (6kV).
- 0-10V dimming (10% - 100%) standard.
- Standard Universal Voltage (120-277 Vac) Input 50/60 Hz or optional High Voltage (347-480 Vac)

- L70 Calculated Life: >50K Hours
- Total harmonic distortion: <20%
- Operating temperature: -40°C to +40°C (-40°F to +104°F).
- Power factor: >.90
- Input power stays constant over life.
- High-efficacy LED circuit board mounted to cast housing to maximize heat dissipation
- Optional emergency battery pack box provides 90-minutes of constant power to the LED system, ensuring code compliance. A test switch/indicator button is installed on the box for ease of maintenance. The fixture delivers approximately 900 lumens during emergency mode.

Installation

- Universal wall mounting plate easily mounts directly to 4" octagonal or square junction box.
- 2 fasteners secure the hinged door underneath the housing and provide quick and easy access to the electrical

- compartment for installing/servicing.
- Back box accessory available for surface conduit and wiring.

Warranty

- LSI luminaires carry a 5-year limited warranty. Complete warranty terms are located on our website.

Listings

- Listed to UL 1598 and UL 8750.
- Suitable for wet Locations.
- IP65 rated Luminaire.
- DesignLights Consortium® (DLC® Premium) qualified product.





Large Commerical LED Wall Light

ORDERING GUIDE

[Back to Quick Links](#)

TYPICAL ORDER EXAMPLE: **SLW LED 20L FT UNV DIM 40 BRZ PC**

Prefix	Light Source	Lumen Package*	Distribution	Voltage
SLW - Large Commercial Wall	LED	14L - 14,000 lm 20L - 20,000 lm	3 - Type 3 FT - Forward Throw Type 4	UNV - Universal Voltage (120-277V) HV - High Voltage (347 - 480V)

Driver	Color Temperature	Color Rendering	Finish	Options
DIM - 0-10v Dimming (10-100%)	50 - 5,000 CCT 40 - 4,000 CCT	BLANK - 70 CRI	BRZ - Bronze	PC - Button Photocontrol (120-277V) SP1 -Surge Protection 10kV EBB - External Battery Backup Box (0°C, 120-277V)

Accessory Ordering Information

Description	Order Number
Wet Location Surface Conduit/Wiring box (Bronze)	739106

PERFORMANCE

[Back to Quick Links](#)

DELIVERED LUMENS*									
Lumen Package	Distribution	CRI	4000K CCT			5000K CCT			Wattage
			Delivered Lumens	Efficacy	BUG Rating	Delivered Lumens	Efficacy	BUG Rating	
14L	FT	70	13848	134	B3-U0-G3	14204	137	B3-U0-G2	104
	3	70	13937	135	B3-U0-G3	14296	138	B3-U0-G3	
20L	FT	70	19827	127	B3-U0-G3	20337	130	B3-U0-G3	156
	3	70	19955	129	B3-U0-G3	20469	132	B3-U0-G3	

*LEDs are frequently updated therefore values are nominal

ELECTRICAL DATA*					
Lumen Package	Wattage	240V	277V	347V	480V
14L	104	0.43	0.37	0.30	0.22
20L	156	0.65	0.56	0.45	0.33

*Electrical data at 25C (77F). Actual wattage may differ by +/-10%.





Large Commerical LED Wall Light

PHOTOMETRICS

[Back to Quick Links](#)

Luminaire photometry has been conducted by an accredited laboratory in accordance with IESNA LM-79. As specified by IESNA LM-79 the entire luminaire is tested as the source resulting in a luminaire efficiency of 100%.

See <http://www.lsi-industries.com/products/led-lighting-solutions.aspx> for detailed photometric data.

SLW-20L-3-40

LUMINAIRE DATA

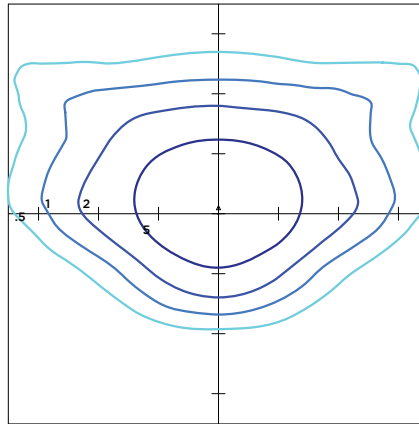
Type 3 Distribution

Description	4000 Kelvin, 70 CRI
Delivered Lumens	19,955
Watts	155
Efficacy	129
IES Type	Type IV - Medium
BUG Rating	B3-U0-G3

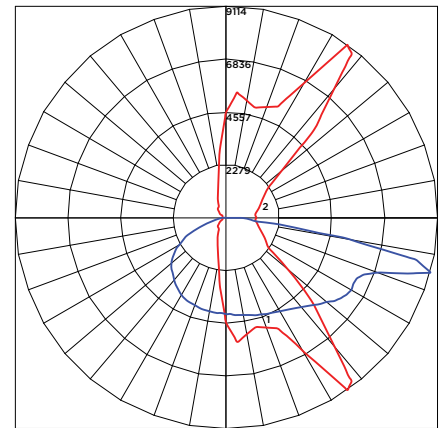
Zonal Lumen Summary

Zone	Lumens	%Luminaire
Low (0-30)°	3532	18%
Medium (30-60)°	9621	48%
High (60-80)°	6297	32%
Very High (80-90)°	505	3%
Uplight (90-180)°	0	0%
Total Flux	19995	100%

ISO FOOTCANDLE PLOT



POLAR CURVE



10' Mounting Height / 10' Grid Spacing



SLW-20L-FT-40

LUMINAIRE DATA

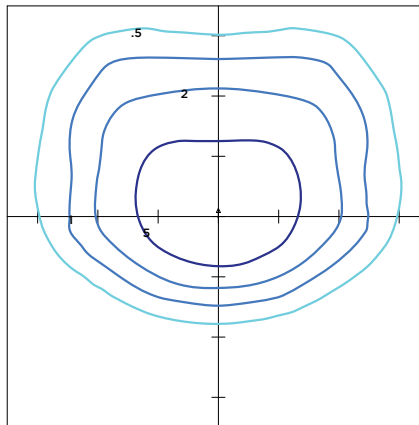
Type FT Distribution

Description	4000 Kelvin, 70 CRI
Delivered Lumens	19,827
Watts	155
Efficacy	128
IES Type	Type IV - Short
BUG Rating	B3-U0-G3

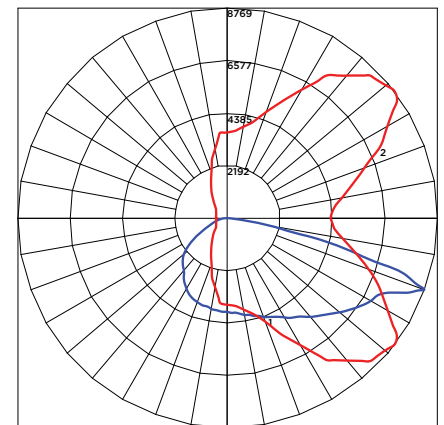
Zonal Lumen Summary

Zone	Lumens	%Luminaire
Low (0-30)°	3445	17%
Medium (30-60)°	9803	49%
High (60-80)°	6337	32%
Very High (80-90)°	243	1%
Uplight (90-180)°	0	0%
Total Flux	19827	100%

ISO FOOTCANDLE PLOT



POLAR CURVE



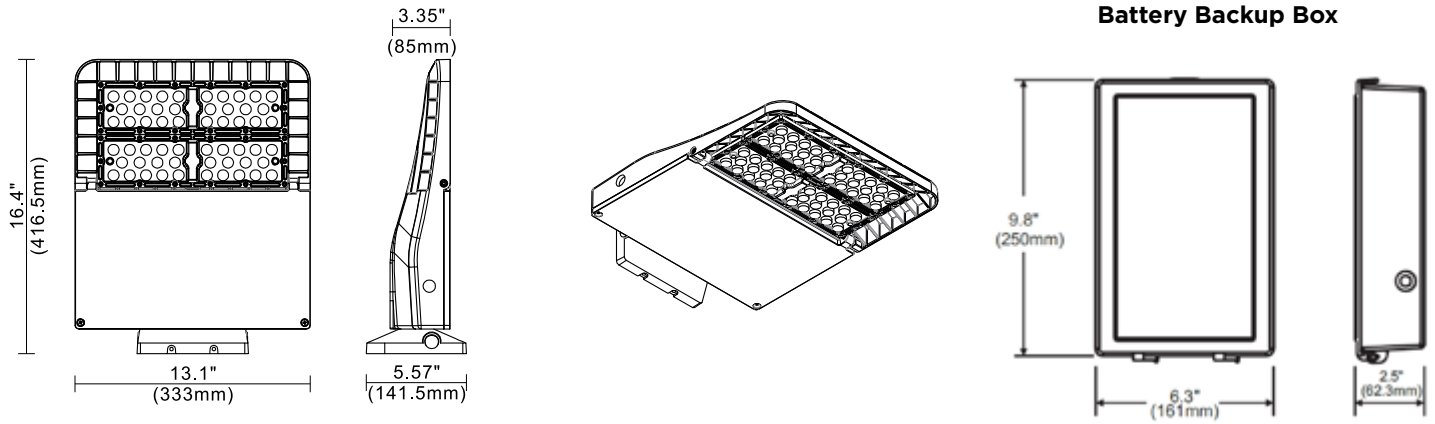
10' Mounting Height / 10' Grid Spacing





PRODUCT DIMENSIONS

[Back to Quick Links](#)



MOUNTING OPTIONS

MOUNTING OVER JUNCTION BOX

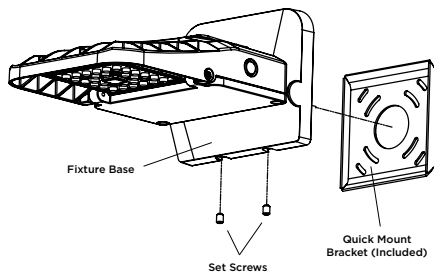
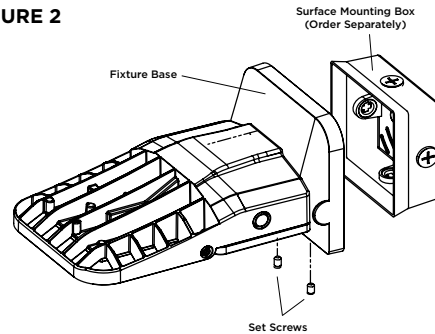
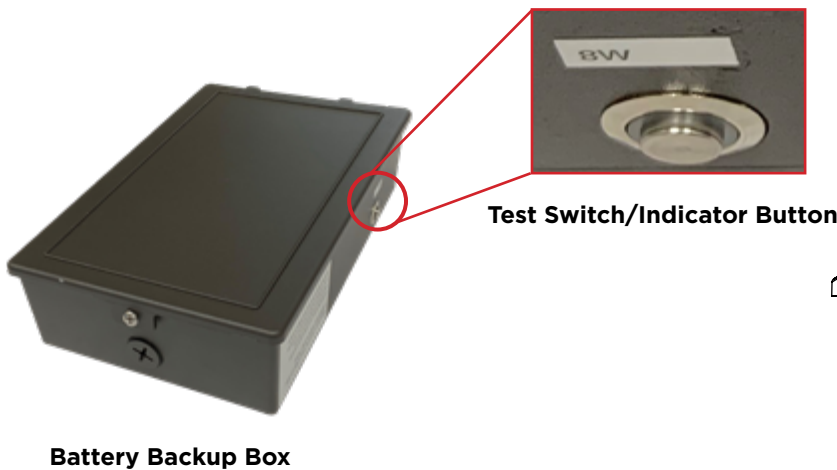


FIGURE 2



BATTERY BACKUP



Mounting/Installation

