



MHB Series

Modular High Bay



OVERVIEW	
Lumen Range	12,000 - 90,000
CCT	4000K, 5000K
Wattage Range	79 - 560
Efficacy Range (LPW)	146 - 162
Weight lbs (kg)	7.5 - 22.5 (3.3 - 9.9)

QUICK LINKS

[Ordering Guide](#)
[Performance](#)
[Photometrics](#)
[Dimensions](#)

FEATURES & SPECIFICATIONS

Construction

- Constructed of 14 gauge die formed aluminum with a post-paint polyester coat finish
- Multiple module configurations are factory installed
- Access panel provides hinged access to wiring and driver connections
- Luminaire is certified to UL/cUL Standards for Damp Locations
- Manufactured in the USA

Optical System

- High impact clear polycarbonate lens available in wide and narrow distributions
- Wide distributions also available with diffuse lens for smoother light
- Minimum CRI of 80

Electrical

- 0-10V dimming (10%-100%) standard
- Standard Universal Voltage (120-277 Vac) Input 50/60 or optional High Voltage (347-480V)
- L70 Calculated Life: >200K hours
- Total Harmonic distortion: <20%
- Operating Temperature -35 to +50C (-31F

to +122F)

- Standard surge protection rated to 20kV/10kA
- Power factor: >.95
- High-performance programmable driver features overvoltage, under voltage, short-circuit and over temperature protection. Custom lumen and wattage packages available.
- Optional emergency battery packs are available to meet critical life-safety lighting requirements.
 - › Integral 7.5W for 120-277V
 - › External 20W for 120-277V or 347-480V

Controls

- Optional integral passive infrared occupancy sensor available
- Optional integral passive infrared occupancy sensor with bluetooth app available

Installation

- Standard mounting with included V hangar
 - › Optional mounting accessories for chain, cable, or single (pendant) monopoint suspension.
- To maintain ambient listing, mount

minimum 6" from ceiling

Warranty

- Complete warranty terms located at: <https://www.lsi-industries.com/resources/terms-and-warranty.aspx>.
- 1 Year warranty on optional Battery Backup. Test regularly in accordance with local codes.

Listings

- List for UL 1598 and UL 8750
- Suitable for damp locations
- Meets Buy American Act Requirements
- State of California Title 24 compliant
- DLC qualified product. Not all versions of this product may be DLC qualified. Please check the DLC Qualified Products List at www.designlights.org/QPL to confirm which versions are qualified.
- IK08 rated luminaire per IEC 66262 mechanical impact code
- Lenses are IP5X rated (dust-resistant)





MHB Series - Modular High Bay

ORDERING GUIDE

[Back to Quick Links](#)TYPICAL ORDER EXAMPLE: **MHB 1 LED 18L CPW UNV 40 EM**

Family	Module Size	LED Technology	Lumen Package	Lens - Distribution	Voltage	Dimming	Color Temperature
MHB	1 - Single (13.5")	LED	12L - 12,000 Lumens 15L - 15,000 Lumens 18L - 18,000 Lumens 24L - 24,000 Lumens 30L - 30,000 Lumens Custom Lumens ⁶	CPW - Clear Polycarbonate Wide ¹⁰ DPW - Diffuse Polycarbonate Wide ¹⁰ CPN - Clear Polycarbonate Narrow ¹⁰	UNV - Universal Voltage (120V-277V) HV - High Voltage (347V-480V)	Standard - Dims to 10% (0-10v dimming)	40 - 4000K 50 - 5000K
	2 - Double (27")		30L - 30,000 Lumens 36L - 36,000 Lumens 48L - 48,000 Lumens 60L - 60,000 Lumens Custom Lumens ⁶				
	3 - Triple (40.5") ¹²		72L - 72,000 Lumens 90L - 90,000 Lumens Custom Lumens ⁶				

Color Rendering	Controls	EM Options	Options
Standard - 80CRI	OMS1 - External PIR motion sensor up to 20ft mounting height OMS2 - External PIR motion sensor up to 40ft mounting height OMSBT1W - External Bluetooth PIR motion and photo sensor up to 8ft OMSBT2W - External Bluetooth PIR motion and photo sensor up to 20ft OMSBT3W - External Bluetooth PIR motion and photo sensor up to 40ft IMSBT1W - Integral Bluetooth™ PIR motion and photo sensor up to 8ft mounting height ³ IMSBT2W - Integral Bluetooth™ PIR motion and photo sensor up to 20ft mounting height ³ IMSBT3W - Integral Bluetooth™ PIR motion and photo sensor up to 40ft mounting height ³	EM - 7.5W Emergency Backup ^{8,11} EMC - EM with 6ft 16/4 non-dimming leads cord ^{9,11} EMCD - EM with 6ft 16/6 dimming leads cord ^{9,11} EM20 - 20W Emergency Backup ^{8,9} EM20HV - 20W Emergency Backup (347-480V) ⁹	EXT - Extended Leads ⁵ CLDS - Center Leads ⁵ CLDSP - Center Leads for pendant mount ¹ E6CN - 6ft cord 16/3 non-dimming; no plug installed on TOP END E6CD - 6ft cord 16/5 dimming; no plug installed on TOP END E10CN - 10ft cord 16/3 non-dimming; no plug installed on TOP END E10CD - 10ft cord 16/5 dimming; no plug installed on TOP END 515P - 5-15 plug only (120V) ^{2,5} L515P - 5-15P Twistlock Plug (125V) ^{2,5} L615P - 6-15P Twistlock Plug (250V) ^{2,5} L715P - 7-15P Twistlock Plug (277V) ^{2,5} L820P - 8-20P Twistlock Plug (480V) ^{2,5} L2420P - 24-20P Twistlock Plug only 347V) ^{2,5}

Accessories (Mounting Options are field installed)

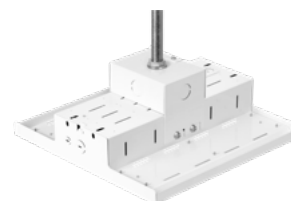
Catalog Number	Description	Order Number
MHB PMK ¹²	Pendant Mount Kit	744308
KIT SHC	Single Hub/Chain Mount	572488
TCH10	10ft Toggle Cable Assembly 2pk	431373
MHB WG1	MHB 1 Wireguard	751410
MHB WG2	MHB 2 Wireguard	751411
MHB WG3	MHB 3 Wireguard	781368

FOOTNOTES:

- Pendant mount requires CLDSP option.
- Standard with 6' cord unless specified with cord/no plug option.
- IMSBT^xW is field configurable; refer to IMSBTW spec sheet for guidance.
- Plugs only valid with 16/3 non-dimming cords.
- EXT and CLDS leads are standarding 16/5 dimming.
- Custom lumen and wattages available, consult factory. Values are within industry standard tolerances and not DLC listed.
- Wire guards are not compatible with integral sensors.
- EM20 and EM20HV is externally mounted and only available in Double and Triple Modules (60L - 90L).
- Not available with HV.
- Lenses are IP5X rated (dust-resistant).
- Not available in Triple Module.
- Pendant Mount Kit (PMK) not available with Triple module.



High Bay Bottom Wireguard

High Bay Pendant Mount Conduit¹²



MHB Series - Modular High Bay

[Back to Quick Links](#)

DELIVERED LUMENS									
Lumen Package	Model Size	Distribution	CRI	4000K CCT			5000K CCT		
				Delivered Lumens	Efficacy	Wattage	Delivered Lumens	Efficacy	Wattage
12L	1	CPW	80	12,386	158	78	12,669	159	79
15L	1	CPW	80	16,144	154	105	16,513	157	105
18L	1	CPW	80	18,597	152	121	19,022	156	121
24L	1	CPW	80	23,910	148	162	23,899	148	162
30L	1	CPW	80	29,550	159	186	30,370	166	183
30L	2	CPW	80	28,347	160	177	29,134	164	177
36L	2	CPW	80	37,194	153	244	38,044	156	244
48L	2	CPW	80	47,820	148	324	47,798	147	324
60L	2	CPW	80	59,100	159	371	60,740	165	367
72L	3	CPW	80	73,035	147	496	74,978	151	496
90L	3	CPW	80	89,545	161	557	91,927	165	557
12L	1	DPW	80	11,126	143	78	11,418	144	79
15L	1	DPW	80	14,567	140	105	14,949	143	105
18L	1	DPW	80	16,767	137	122	17,207	141	122
24L	1	DPW	80	21,506	133	162	21,404	133	162
30L	1	DPW	80	26,470	143	185	27,343	149	184
30L	2	DPW	80	25,537	144	178	26,379	149	177
36L	2	DPW	80	33,534	137	244	34,414	141	244
48L	2	DPW	80	43,012	132	324	42,808	136	323
60L	2	DPW	80	52,940	142	371	54,686	149	367
72L	3	DPW	80	64,943	133	489	66,671	136	489
90L	3	DPW	80	79,424	142	559	81,537	146	559
12L	1	CPN	80	11,089	142	78	11,501	145	79
15L	1	CPN	80	14,652	140	105	15,196	145	105
18L	1	CPN	80	16,766	138	122	17,389	143	122
24L	1	CPN	80	21,363	143	162	21,491	132	162
30L	1	CPN	80	26,488	143	185	27,097	148	183
30L	2	CPN	80	25,400	144	177	25,552	145	177
36L	2	CPN	80	33,532	138	243	34,778	143	243
48L	2	CPN	80	42,726	132	323	42,982	133	324
60L	2	CPN	80	52,976	143	371	54,194	148	367
72L	3	CPN	80	60,801	125	487	62,419	128	487
90L	3	CPN	80	76,157	136	560	78,183	140	560

RECOMMENDED LUMEN MAINTENANCE ¹ (12L-18L)					
Ambient Temp C	Initial ²	25K hr ²	50K hr ²	75K hr ³	100K hr ³
0-25 C	101%	96%	91%	87%	82%
40 C	101%	95%	90%	85%	80%

RECOMMENDED LUMEN MAINTENANCE ¹ (48L)					
Ambient Temp C	Initial ²	25K hr ²	50K hr ²	75K hr ³	100K hr ³
0-25 C	101%	96%	91%	87%	83%
40 C	101%	95%	90%	86%	81%

RECOMMENDED LUMEN MAINTENANCE ¹ (30L)					
Ambient Temp C	Initial ²	25K hr ²	50K hr ²	75K hr ³	100K hr ³
40 C	99%	97%	94%	92%	90%

RECOMMENDED LUMEN MAINTENANCE ¹ (60L)					
Ambient Temp C	Initial ²	25K hr ²	50K hr ²	75K hr ³	100K hr ³
40 C	99%	97%	94%	92%	90%

RECOMMENDED LUMEN MAINTENANCE ¹ (24L-30L Double Module)					
Ambient Temp C	Initial ²	25K hr ²	50K hr ²	75K hr ³	100K hr ³
0-25 C	101%	96%	91%	87%	83%
40 C	101%	95%	90%	86%	81%

RECOMMENDED LUMEN MAINTENANCE ¹ (72L)					
Ambient Temp C	Initial ²	25K hr ²	50K hr ²	75K hr ³	100K hr ³
0-25 C	101%	96%	91%	87%	83%
40 C	101%	95%	90%	86%	81%

RECOMMENDED LUMEN MAINTENANCE ¹ (36L)					
Ambient Temp C	Initial ²	25K hr ²	50K hr ²	75K hr ³	100K hr ³
0-25 C	101%	96%	91%	87%	82%
40 C	101%	95%	90%	85%	80%

RECOMMENDED LUMEN MAINTENANCE ¹ (90L)					
Ambient Temp C	Initial ²	25K hr ²	50K hr ²	75K hr ³	100K hr ³
40 C	99%	97%	94%	92%	90%

FOOTNOTES:

- Lumen maintenance values at 25C are calculated per TM-21 based on LM-80 and in-situ testing.
- In accordance with IESNA TM-21-11, projected values represent interpolated value based on time durations that are within six times the IESNA LM-80-08 total test duration for the device under testing.
- In accordance with IESNA TM-21-11, calculated values represent time durations that exceed six times the IESNA LM-80-08 total test duration for the device under testing.



**PHOTOMETRICS**[Back to Quick Links](#)

Luminaire photometry has been conducted by a NVLAP accredited testing laboratory in accordance with IESNA LM-79-08. As specified by IESNA LM-79-08 the entire luminaire is tested as the source resulting in a luminaire efficiency of 100%.

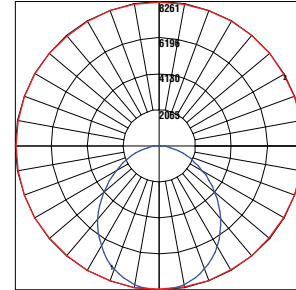
See [PRODUCT PAGE URL GOES HERE](#) for detailed photometric data.

MHB-24L-DPW-40-80CRI**LUMINAIRE DATA**

Symmetrical Distribution	
Description	4000 Kelvin, 80 CRI
Delivered Lumens	21,648
Watts	164
Efficacy	132

Zonal Lumen Summary

Zone	Lumens	%Luminaire
Low (0-30°)	6269	29%
Medium (30-60°)	18657	86%
High (60-80°)	3961	18%
Very High (80-90°)	433	2%
Uplight (90-180°)	0	0%
Total Flux	21648	100%

POLAR CURVE

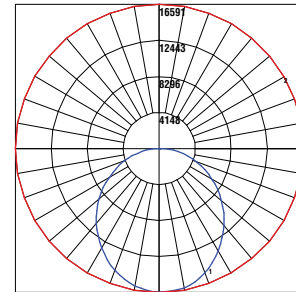
20' Mounting Height/20' Grid Spacing
 ■ 5 FC ■ 2 FC ■ 1 FC ■ 0.5 FC

MHB-48L-DPW-40-80CRI**LUMINAIRE DATA**

Symmetrical Distribution	
Description	4000 Kelvin, 80 CRI
Delivered Lumens	43,446
Watts	328
Efficacy	132

Zonal Lumen Summary

Zone	Lumens	%Luminaire
Low (0-30°)	12580	29%
Medium (30-60°)	22025	51%
High (60-80°)	7959	18%
Very High (80-90°)	881	2%
Uplight (90-180°)	0	0%
Total Flux	43446	100%

POLAR CURVE

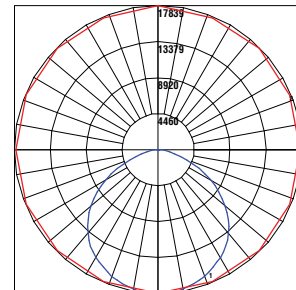
20' Mounting Height/20' Grid Spacing
 ■ 5 FC ■ 2 FC ■ 1 FC ■ 0.5 FC

MHB-48L-CPW-40-80CRI**LUMINAIRE DATA**

Symmetrical Distribution	
Description	4000 Kelvin, 80 CRI
Delivered Lumens	48,739
Watts	328
Efficacy	149

Zonal Lumen Summary

Zone	Lumens	%Luminaire
Low (0-30°)	13809	28%
Medium (30-60°)	26386	54%
High (60-80°)	7970	16%
Very High (80-90°)	574	1%
Uplight (90-180°)	0	0%
Total Flux	48739	100%

POLAR CURVE

20' Mounting Height/20' Grid Spacing
 ■ 5 FC ■ 2 FC ■ 1 FC ■ 0.5 FC

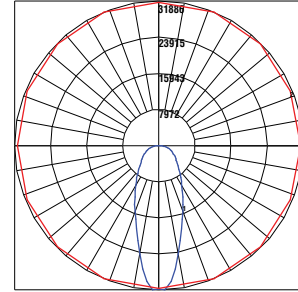


**PHOTOMETRICS**[Back to Quick Links](#)**MHB-48L-CPN-40-80CRI****LUMINAIRE DATA**

Symmetrical Distribution	
Description	4000 Kelvin, 80 CRI
Delivered Lumens	42,073
Watts	328
Efficacy	128

Zonal Lumen Summary

Zone	Lumens	%Luminaire
Low (0-30°)	16976	40%
Medium (30-60°)	19038	45%
High (60-80°)	5414	13%
Very High (80-90°)	644	2%
Uplight (90-180°)	0	0%
Total Flux	42073	100%

POLAR CURVE

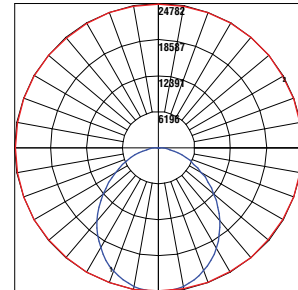
20' Mounting Height/20' Grid Spacing

■ 5 FC
 ■ 2 FC
 ■ 1 FC
 ■ 0.5 FC
MHB-72L-DPW-40-80CRI**LUMINAIRE DATA**

Symmetrical Distribution	
Description	4000 Kelvin, 80 CRI
Delivered Lumens	64,942
Watts	328
Efficacy	198

Zonal Lumen Summary

Zone	Lumens	%Luminaire
Low (0-30°)	18808	29%
Medium (30-60°)	32947	51%
High (60-80°)	11886	18%
Very High (80-90°)	1302	2%
Uplight (90-180°)	0	0%
Total Flux	64942	100%

POLAR CURVE

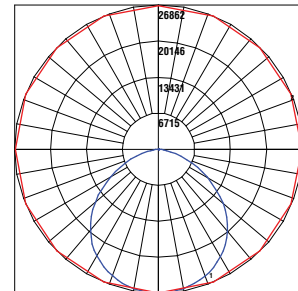
20' Mounting Height/20' Grid Spacing

■ 5 FC
 ■ 2 FC
 ■ 1 FC
 ■ 0.5 FC
MHB-72L-CPW-40-80CRI**LUMINAIRE DATA**

Symmetrical Distribution	
Description	4000 Kelvin, 80 CRI
Delivered Lumens	73,035
Watts	496
Efficacy	147

Zonal Lumen Summary

Zone	Lumens	%Luminaire
Low (0-30°)	20841	29%
Medium (30-60°)	39461	54%
High (60-80°)	11881	16%
Very High (80-90°)	852	1%
Uplight (90-180°)	0	0%
Total Flux	73035	100%

POLAR CURVE

20' Mounting Height/20' Grid Spacing

■ 5 FC
 ■ 2 FC
 ■ 1 FC
 ■ 0.5 FC




PHOTOMETRICS

[Back to Quick Links](#)

MHB-72L-CPN-40-80CRI

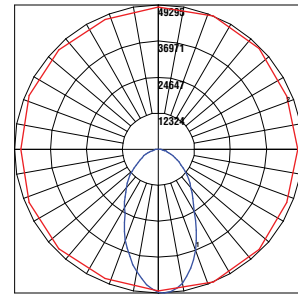
LUMINAIRE DATA

Symmetrical Distribution	
Description	4000 Kelvin, 80 CRI
Delivered Lumens	60,801
Watts	328
Efficacy	185

Zonal Lumen Summary

Zone	Lumens	%Luminaire
Low (0-30°)	25066	41%
Medium (30-60°)	26893	44%
High (60-80°)	7901	13%
Very High (80-90°)	940	2%
Uplight (90-180°)	0	0%
Total Flux	60801	100%

POLAR CURVE



20' Mounting Height/20' Grid Spacing
 ■ 5 FC ■ 2 FC ■ 1 FC ■ 0.5 FC

PRODUCT DIMENSIONS

