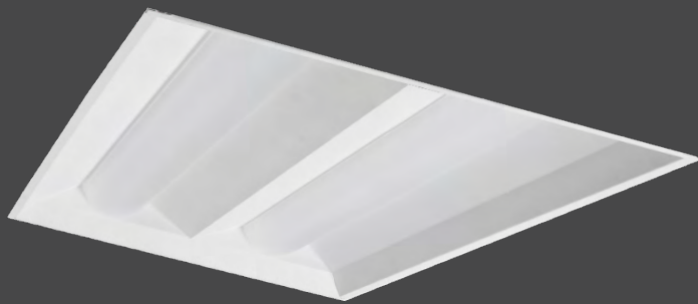


Catalog # :

Project :

Prepared By :

Date :



LED High Efficiency, Expansive Cavity Recessed (ASC)

The LED ASC is recessed direct/indirect ambient fixture specially designed to spread uniform illumination throughout the interior room cavity hitting vertical surfaces from ceiling to floor. This high performance fixture comes in 2 sizes with a choice of lumen outputs to best light your space. With their exceptionally long life, the LED light source makes the ASC virtually maintenance free.

Features & Specifications

Optical System

- Matte white reflectors for soft indirect light distribution.
- LENS - Specially designed frosted extruded acrylic lens for maximum source diffusion and soft, even illumination.
- Use of closely spaced medium-power, high brightness chips provide uniform lens luminance with no dead spots.
- Available in 4000K, 5000K color temperatures.
- Minimum CRI of 80.

Electrical

- High-performance driver features over-voltage, under voltage, short-circuit and over temperature protection.
- 0-10 volt dimming (5% - 100%) standard.
- Standard Universal Voltage (120-277 Vac) Input 50/60 Hz or optional High Voltage (347-480 Vac).
- L80 Calculated Life: >100k Hours (See Lumen Maintenance on Page 2)
- Total harmonic distortion: <20%
- Class A sound rating
- Optional 120v-277v integral emergency battery pack is available to meet critical life safety lighting requirements. The 90-minute batteries provide constant power to the LED system, ensuring code compliance. A test switch/indicator button is installed on the housing for ease of maintenance.
- Power factor: >.95
- Input power stays constant over life.

Construction

- HOUSING - Formed code-gauge steel housing, painted after fabrication.
- Integral NEC compliant earthquake clips are standard.
- FINISH - All metal parts are painted after fabrication following treatment with phosphate rust inhibitor.
- Finish coating of housing reflecting surfaces is with high-reflectance (minimum 92%) matte white polyester powder.
- Shipping weight: XXlbs in carton



Dimmable

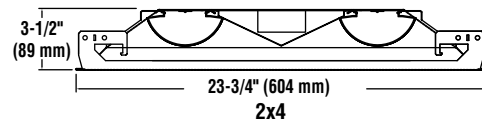


WIRELESS CONTROLS

ARRA
Funding Compliant



Dimensions





LED High Efficiency, Expansive Cavity Recessed (ASC)

Features & Specifications (Cont.)

Installation

- INSTALLATION - Unit simply lifts through grid ceiling and rests on T-bars
- Wiring access/strain relief plate attaches with two screws, allowing connections to be made from below the ceiling.

Warranty

- LSI LED Fixtures carry a 5-year warranty.
- 1 Year warranty on optional Battery Back Up. Test regularly in accordance with local codes

Listings

- Listed to UL 1598 and UL 8750
- American Recovery and Reinvestment Act Funding Compliant
- IC Rated
- State of California Title 24
- Suitable For Damp Locations

Luminaire Ordering Guide

TYPICAL ORDER EXAMPLE: **ASC22 LED 40L UNV DIM1 40 ALSCS**

Family	LED Technology	Lumen Package*	Voltage	Driver	Color Temperature	Controls	Options
ASC22	LED	30L - 3,000 Lumens 40L - 4,000 Lumens	UNV - 120-277 347 - 347 Volt	DIM5 - 0-10 volt dimming (5%-100%) - (Standard)	40 - 4000K 50 - 5000K	Blank - No Controls ALC - AirLink™ Controller ALOS - AirLink™ Controller w/ Occupancy Sensor ALVS - AirLink™ Controller w/ Vacancy Sensor	Blank - None BB90 - Battery Backup 90 minutes at 1400L FC1 - 6' 3/8" (3) #18 Leads (for Non-Dimming) FC15D - 6' 3/8" (5) #18 Leads (For Dimming)
ASC24		40L - 4,000 Lumens 48L - 4,800 Lumens 60L - 6,000 Lumens		DIM1 - 0-10 volt dimming (1%-100%) * DIM5 not available in 347V			

ACCESSORY ORDERING INFORMATION (Accessories are field installed)

Description	Order Number
Flange Kit - 2x2	M20027
Flange Kit - 2x4	M20028

AIRLINK™ CONTROL ACCESSORIES Order as separate catalog number. Visit <http://www.lsi-airlink.com> for complete listing of AirLink™ controls.

Wireless switches	Catalog number	Part Number	Wireless Occupancy Sensors	Part Number
On/Off & Raise Lower	ALWS 3B-(color)-KIT ²	624103CLR ²	Wireless 360° 400 ft ² , Ceiling Mount	624094
			Wireless 180° 3000 ft ² , Wall Mount	632617
Wireless Photocell controls	Catalog number	Part Number	Wireless 90° 2500 ft ² , Corner Mount	Part Number
On/Off & Dimming	ALCM-W-PC	624090	Wireless, Hallway 150 ft Length	632620
Commission Laser Kit (See Laser warnings)	AL-CLK	634574		

FOOTNOTES:

- 1 - Not available with AirLink
- 2 - Available colors are White, Ivory and Light Almond (WHT, IV, LA)
- 3 - ASC14 not available with ALOS or ALVS
- 4 - Custom lumen and CCT packages available, please consult factory. Values are within industry-standard tolerances and not DLC listed.



LED High Efficiency, Expansive Cavity Recessed (ASC)

Performance

ASC22 ELECTRICAL DATA (Amps)*					
Lumen Package	Watts	120V	208V	240V	277V
30L	23	0.19	0.11	0.10	0.08
40L	32	0.26	0.15	0.13	0.11

*Electrical data at 25C (77F). Actual wattage may differ by +/-10%.

ASC22 RECOMMENDED LUMEN MAINTENANCE (40L) ¹					
Ambient Temperature C	0 hrs. ²	25K hrs. ²	50K hrs. ²	75K hrs. ³	100K hrs. ³
25 C	100%	96%	93%	89%	86%

- 1 - Lumen maintenance values at 40C are calculated per TM-21 based on LM-80 data and in-situ testing.
- 2 - In accordance with IESNA TM-21-11, Projected Values represent interpolated value based on time durations that are within six times the IESNA LM-80-08 total test duration for the device under testing.
- 3 - In accordance with IESNA TM-21-11, Calculated Values represent time durations that exceed six times the IESNA LM-80-08 total test duration for the device under testing.

ASC24 ELECTRICAL DATA (Amps)*					
Lumen Package	Watts	120V	208V	240V	277V
40L	29	0.24	0.14	0.12	0.11
48L	35	0.29	0.17	0.15	0.13
60L	44	0.37	0.21	0.18	0.16

*Electrical data at 25C (77F). Actual wattage may differ by +/-10%.

ASC24 RECOMMENDED LUMEN MAINTENANCE (40L) ¹					
Ambient Temperature C	0 hrs. ²	25K hrs. ²	50K hrs. ²	75K hrs. ³	100K hrs. ³
25 C	100%	96%	93%	89%	86%

- 1 - Lumen maintenance values at 40C are calculated per TM-21 based on LM-80 data and in-situ testing.
- 2 - In accordance with IESNA TM-21-11, Projected Values represent interpolated value based on time durations that are within six times the IESNA LM-80-08 total test duration for the device under testing.
- 3 - In accordance with IESNA TM-21-11, Calculated Values represent time durations that exceed six times the IESNA LM-80-08 total test duration for the device under testing.

DELIVERED LUMENS (ASC22)*								
Lumen Package	Lens Type	LED Gen.	CRI	4000K CCT		5000K CCT		Wattage
				Delivered Lumens	Efficacy	Delivered Lumens	Efficacy	
30L	ACR	DIM1	80	3036	131	3036	131	23
30L	ACR	DIM5	80	3041	136	3041	136	22
40L	ACR	DIM1	80	4033	127	4033	127	32
40L	ACR	DIM5	80	4026	132	4026	132	31

DELIVERED LUMENS (ASC24)*								
Lumen Package	Lens Type	LED Gen.	CRI	4000K CCT		5000K CCT		Wattage
				Delivered Lumens	Efficacy	Delivered Lumens	Efficacy	
40L	ACR	DIM1	80	4020	138	4020	138	29
40L	ACR	DIM5	80	4030	145	4030	145	28
48L	ACR	DIM1	80	4840	138	4840	138	35
48L	ACR	DIM5	80	4644	145	4644	145	32
60L	ACR	DIM1	80	6002	137	6002	137	44

*LED Chips are frequently updated therefore values are nominal.

AirLink™ ALOS AND ALVS COVERAGE PATTERN

