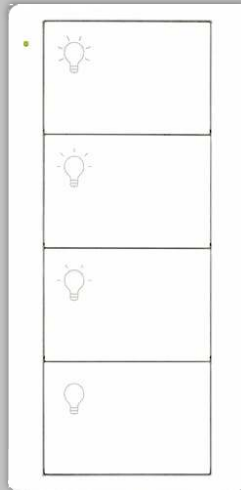


_____ Project name
 _____ Prepared by
 / / Date



AirLink™ 4 Button Wireless Switch

enabled by Lutron®



Catalog #: **ALWS 4XXX**
 Part #: **(see ordering guide)**

The wireless switch (4-button) is a flexible and easy to use device that allows the user to control wireless load-control devices from anywhere in the space. This battery-operated control requires no external power or communication wiring. The switch utilizes Lutron Clear Connect RF technology for wireless communication.

Applications



Small offices



Conference rooms



Classrooms



Lounges

Features

All wireless controls are also compatible with the wireless hub which provides a simple setup process using a standard web browser on any Wi-Fi enabled phone, tablet or computer. The hub enables control and monitoring of all wireless devices. The hub can be added at any time. System reprogramming required.

- Control available in a variety of button marking options
- Easy reconfiguration for use as:
 - Handheld remote
 - Wall-mount control (with or without faceplate; faceplate adapter kit sold separately)
 - A table top control (table top pedestal sold separately)
- Battery-powered. Requires no wiring
- 10 year battery life (one CR2032 battery included)
- Can provide control of blinds, curtains, or lighting devices within a range of 30ft (9m) through walls and 60ft (18m) line-of-sight

Specifications

Regulatory Approvals

- Lutron Quality Systems registered to ISO 9001:2008.
- FCC Certified (U.S.A.)
- IC Certified (Canada)
- COFETEL Certified (Mexico)
- SUTEL Certified (Costa Rica)
- Anatel Certified (Brazil)

System Communication & Capacity

- Communicates using Radio Frequency (RF) at 431MHz to 437MHz.
- Thousands of system addresses prevent interference between systems.
- Can be assigned to control blinds, curtains or lighting devices that are within a 30ft (9m) range through walls and 60ft (18m) line-of-sight

Certifications & Affiliations





Specifications Continued

Power and Performance

- Operating voltage: 3V ---
- Requires one CR 2032 lithium battery

Environmental

- Ambient operating temp: 32°F to 140°F (0°C to 60°C)
- Relative humidity:
maximum 90% non-condensing; indoor use only

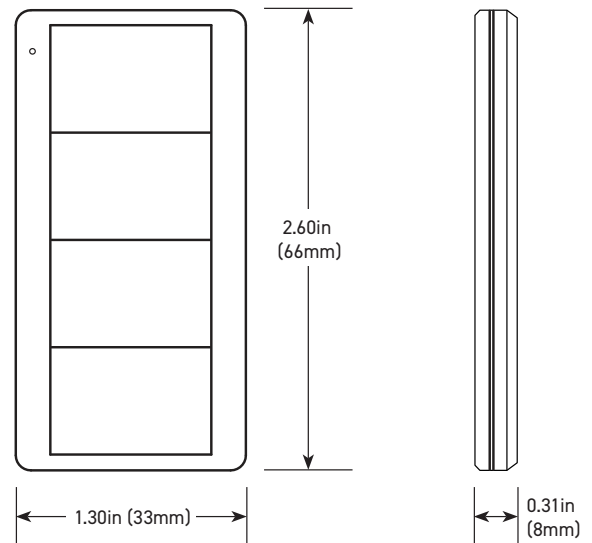
Mounting Considerations

- Mounting of any RF devices on or in close proximity to a metal surface will drastically reduce the effective range of radio signal transmission or reception
- All RF devices must be mounted on nonconductive materials to ensure proper performance

Warranty

- 1-year Limited Warranty

Dimensions



Ordering Information

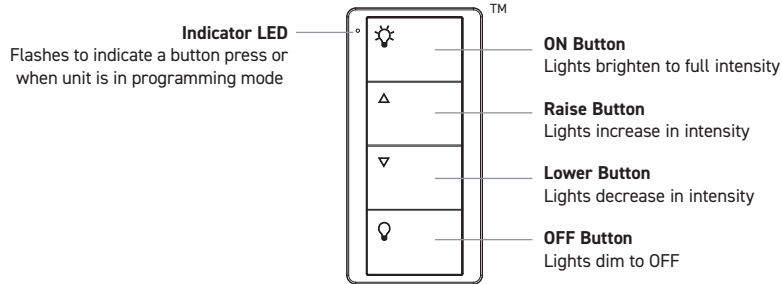
All switches and wall kits available in White (WHT/WH), Ivory (IV), and Light Almond (LA) Example: 655149WHT or ALWS 4B2S WH

Part #	Catalog #	Description
665149WHT	ALWS 4B2S WH	AirLink System – Wireless Switch 4 Button, 2 Scene in White
665149IV	ALWS 4B2S IV	AirLink System – Wireless Switch 4 Button, 2 Scene in Ivory
665149LA	ALWS 4B2S LA	AirLink System – Wireless Switch 4 Button, 2 Scene in Light Almond
665155WHT	ALWS 4B2G WH	AirLink System – Wireless Switch 4 Button, Dual Group in White
665155IV	ALWS 4B2G IV	AirLink System – Wireless Switch 4 Button, Dual Group in Ivory
665155LA	ALWS 4B2G LA	AirLink System – Wireless Switch 4 Button, Dual Group in Light Almond
665159WHT	ALWS 4S WH	AirLink System – Wireless Switch 4 Scene in White
665159IV	ALWS 4S IV	AirLink System – Wireless Switch 4 Scene in Ivory
665159LA	ALWS 4S LA	AirLink System – Wireless Switch 4 Scene in Light Almond

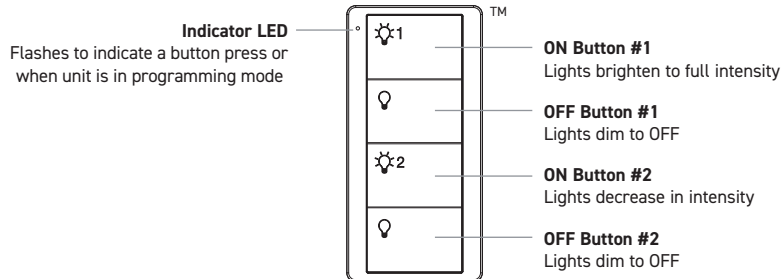


Operations

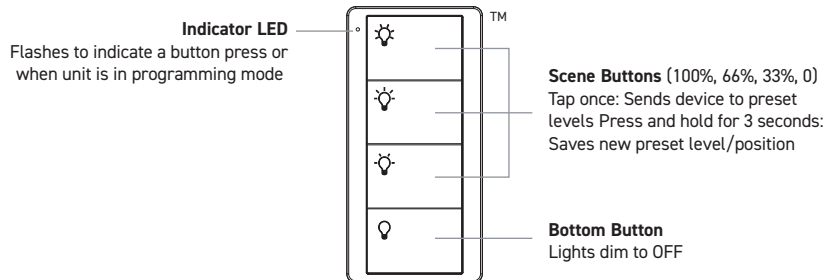
Switch for zone controls
ALWS 4B2S XX



Switch for group controls
ALWS 4B2G XX



Switch for scene controls
ALWS 4S XX



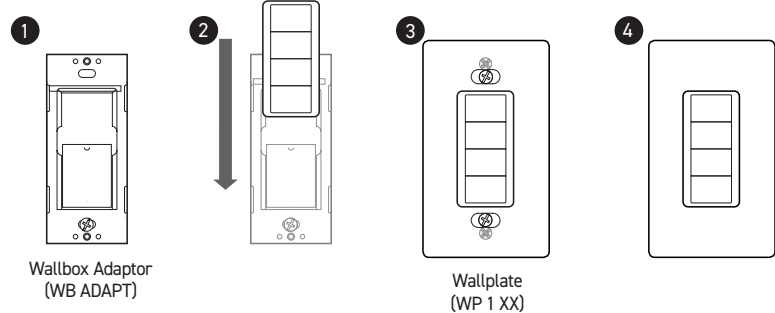


Accessories

Wall Mounting

To mount the 2 Button wireless switch on a wall, a wallbox adaptor and wallplate are required. Wallplates are available from 1 to 4 gang. The 2 Button wireless switch can be ordered in a wall kit, which includes the switch, wallplate adapter and the wallbox adapter (see ordering guide on previous page).

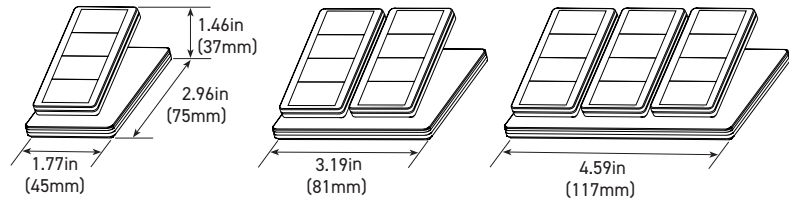
Wall Mounting Diagram



Tabletop Pedestal

The wireless switch can also be attached to a pedestal for handheld or tabletop control. They can be purchased in 1, 2, or 3 gang. All pedestals come in white with a glossy finish. Note that the pedestals are sold separately from the wireless switches and other accessories. See drawings (to the right) for 1–3 gang pedestal dimensions. Pedestals (with attached wireless switches) can control lighting devices that are within a 30ft (9m) range.

Tabletop Pedestal Dimensions



Accessory Ordering Information

Wallplates & Wallbox Adaptor

Part #	Catalog #	Description
624123	WB ADAPT	Wallbox Adaptor
624124WHT	WP 1 WH	Wallplate 1 Gang in White
624124IV	WP 1 IV	Wallplate 1 Gang in Ivory
624124LA	WP 1 LA	Wallplate 1 Gang in Light Almond
624125WHT	WP 2 WH	Wallplate 2 Gang in White
624125IV	WP 2 IV	Wallplate 2 Gang in Ivory
624125LA	WP 2 LA	Wallplate 2 Gang in Light Almond
624127WHT	WP 3 WH	Wallplate 3 Gang in White
624127IV	WP 3 IV	Wallplate 3 Gang in Ivory
624127LA	WP 3 LA	Wallplate 3 Gang in Light Almond
624128WHT	WP 4 WH	Wallplate 4 Gang in White
624128IV	WP 4 IV	Wallplate 4 Gang in Ivory
624128LA	WP 4 LA	Wallplate 4 Gang in Light Almond

Tabletop Pedestal

Part #	Catalog #	Description
624110	P 1 WH	Pedestal 1 Gang in White
624111	P 2 WH	Pedestal 2 Gang in White
624113	P 3 WH	Pedestal 3 Gang in White



AirLink™ 4 Button Wireless Switch

enabled by Lutron®

The AirLink System

Wireless controls & sensors



Wireless remotes & switches



Occupancy/Vacancy & Daylight sensors



AirLink-integrated Fixtures

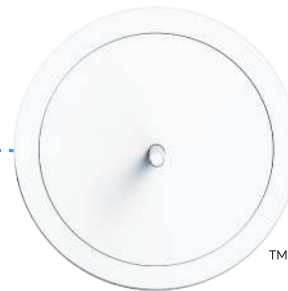


AirLink-compatible Fixtures



Plug load controllers

Centralized control & integration



Wireless hub

Wired / Ethernet



Demand Response



BACnet integration

Simple-to-use software



Lighting control web app

Contact LSI Controls



Sales
controls.sales@lsi-industries.com



Support
controls.support@lsi-industries.com
1 (800) 436-7800 (support, option 8)



More information
For more information on AirLink, visit our website at www.lsi-airlink.com/airlink