



# Sculpted Light Form (SLF)



9"x9"



12"x12"



18"x18"



| OVERVIEW        |             |
|-----------------|-------------|
| Lumen Range     | 500 - 1,800 |
| CCT (K)         | 4000K       |
| Efficacy (LPW)  | 100         |
| Weight lbs (kg) |             |
| 9" x 9"         | 2.3 (1.0)   |
| 12" x 12"       | 4.5 (2.0)   |
| 18" x 18"       | 6.5 (3.0)   |

## FEATURES & SPECIFICATIONS

### Construction

- Precision-cut, die-formed Aluminum housing
- Scratch-resistant powder coat
- Diffuse Acrylic Lens
- UL listed
- Meets FCC Title 47 EMC limits

### Optical System

- 9" x 9" - 500lm
- 12" x 12" - 800lm
- 18" x 18" - 1,800lm
- 4000K Correlated Color Temperature
- 80 min. Color Rendering Index (CRI)

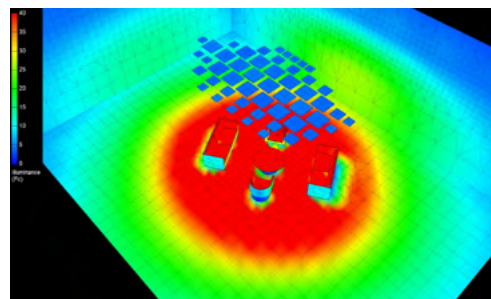
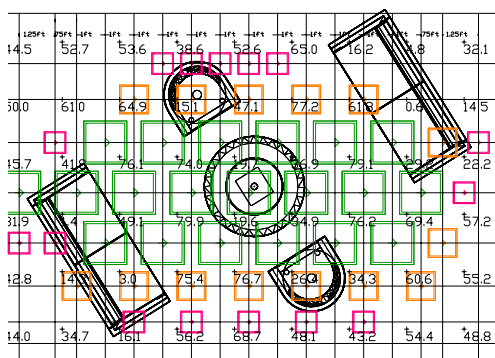
### Electrical

- High-performance solid state driver
- 120VAC 50Hz input voltage
- THD < 20%
- Power Factor > 0.9
- Operating Temperature: 32°F (0°C) - 95°F (35°C)

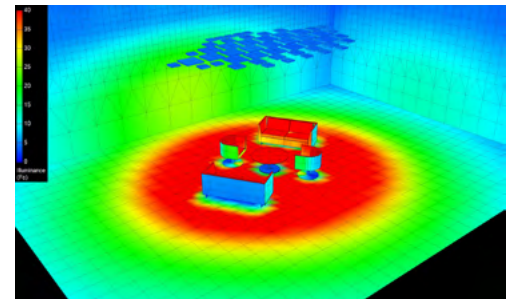
### Installation

- Lighting elements are installed into the track at the desired locations and fixed into position using the locking mechanism on the track adapter
- Rotation of lighting elements not required for installation
- Tracks can be connected end to end using the supplied track joiner accessory for a seamless appearance
- Tracks can be surface mounted (hardware supplied by others) or cable mounted
- Aircraft cable mounting kit shipped as standard

## RADIOSITY



High Perspective - 40FC Scale



Perspective - 40FC Scale



# Sculpted Light Form (SLF)

## ORDERING GUIDE

TYPICAL ORDER EXAMPLE: **SLF 60 LOBBY1**

| Prefix                    | Number of Elements            | Design                           |
|---------------------------|-------------------------------|----------------------------------|
| SLF - Sculpted Light Form | XX - number of light elements | XXXXX - Customer design specific |

**Notes:**

- Track can be cut to the desired length in the field.
- Light output and form factor relationship is fixed: 500lm for 9"x9", 800lm for 12"x12" and 1800lm for 18"x18".

## Replacement Parts

| Prefix                             |
|------------------------------------|
| SLE9 - 9" Sculpted Light Element   |
| SLE12 - 12" Sculpted Light Element |
| SLE18 - 18" Sculpted Light Element |
| ACK - Aircraft cable Mounting Kit  |
| TJ - Track joiner                  |
| TFC - Track feed connector         |
| TR 6 BLK - 6ft. track black        |



TR 6 BLK - 6ft. Track Black



TFC - Track Feed Connector



ACK - Aircraft Cable Mounting Kit



TJ - Track Joiner

## PERFORMANCE

| ELECTRICAL DATA* |             |                   |
|------------------|-------------|-------------------|
| Lumen Package    | Wattage (W) | Input Current (A) |
| SLE9             | 5.4         | 0.04              |
| SLE12            | 7.8         | 0.07              |
| SLE18            | 15.4        | 0.13              |

\*Electrical data at 25°C (77°F), 120VAC. Actual Wattage may vary by ±10%.

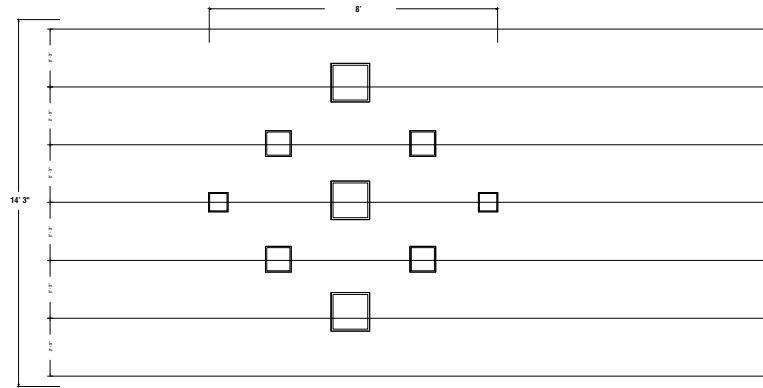




# Sculpted Light Form (SLF)

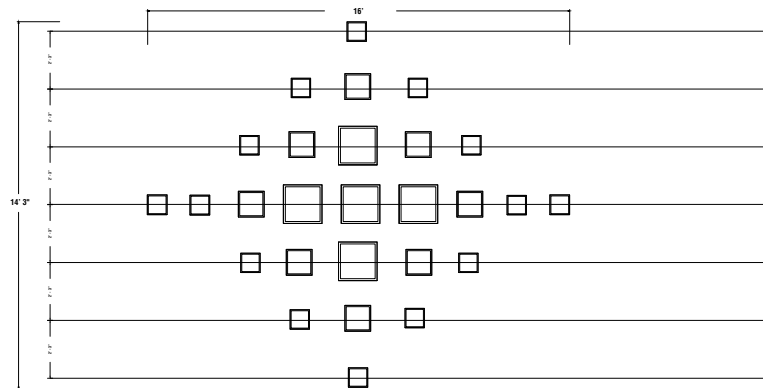
## SAMPLE LAYOUTS

### EXAMPLE DESIGN 1



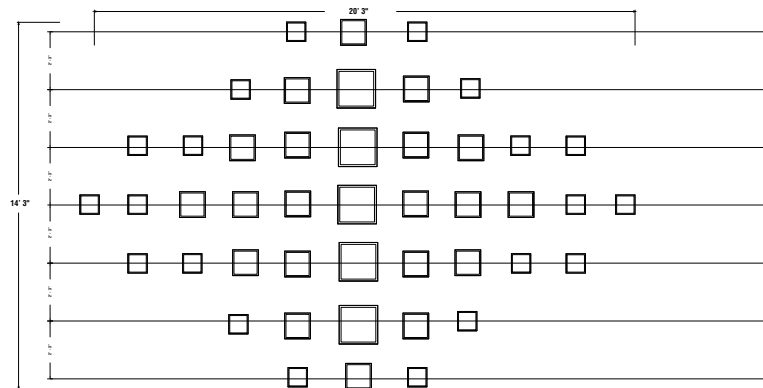
TR 6 BLK = 6PCS  
 TFC = 5PCS  
 TJ = 1PCS  
 ACK = 18PCS

### EXAMPLE DESIGN 2



TR 6 BLK = 11PCS  
 TFC = 7PCS  
 TJ = 4PCS  
 ACK = 33PCS

### EXAMPLE DESIGN 3



TR 6 BLK = 14PCS  
 TFC = 7PCS  
 TJ = 7PCS  
 ACK = 42PCS

