



DECO® | LIGHTING

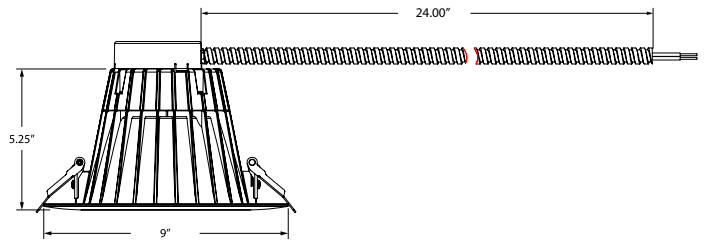
DRT-8-LED

DECO DRT-8 Lumens+



Job Information

Type:	
Catalog #:	
Project:	
Comments:	
Prepared by:	



Description

Our DECO DRT-8 Lumen+ unit is an eight-inch LED recessed downlight kit creating high performing white light which is optimized for new construction and retrofit applications. Installation is done quickly and easily in most standard eight-inch frames. Quality of DRT-8 Series provides excellent color rendering (90+ CRI), and a selection of color temperatures (3000K, 4000K, 5000K). LEDs have virtually no UV or infrared radiation to damage or fade furnishings, art or other objects. Optical Design Optical design efficiently directs light output in an 80° beam angle with low glare.

Features

- Operating temperature range between -4°F and +104°F (-20°C and +40°C).
- Suitable for indoor use, including dry, damp and wet location environments.
- Not intended for use with emergency light fixtures or exit lights.
- Designed to install in standard 8" mounting frame.
- Dimming Standard (at 120V line voltage only)
- CRI: 90+

Ordering Information

Example: (DRT-8-LED-35-40-UNV)

DRT-8-LED

Series	Wattage/Lumen	Color Temp.	Voltage
Deco DRT-8 Lumen +	35 35W/2230 ¹	30 3000K 40 4000K 50 5000K	UNV 120-277V

¹Delivered Lumens (5000K)

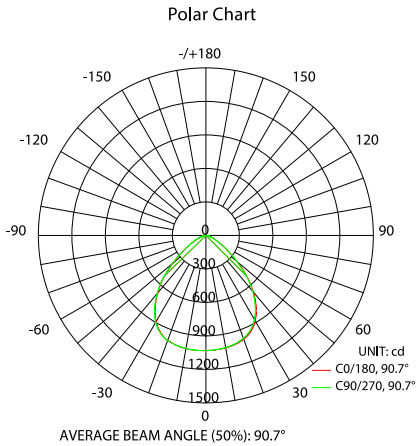
Deco Lighting practices a program of continuous product development, and as a result product specifications change frequently. We reserve the right to change product specifications without notice. Contact Deco for the latest product information.

©2016 Deco Lighting, www.getdeco.com T: (800) 613-DECO F: (310) 366-6855
Rev Date: 10/27/16 #2



Digitize your light.®

Photometric Data



Zonal Lumen Distribution

Zone	Lumens	% Retrofit Kit
0-20	384	19
0-30	822	41
0-40	1312	65
0-60	1943	97
0-80	2090	104
0-90	2106	105
10-90	2008	100
20-40	927	46
20-50	1330	66
40-70	734	3
60-80	146	67
70-80	43	2
80-90	16	0
0-180	2106	105

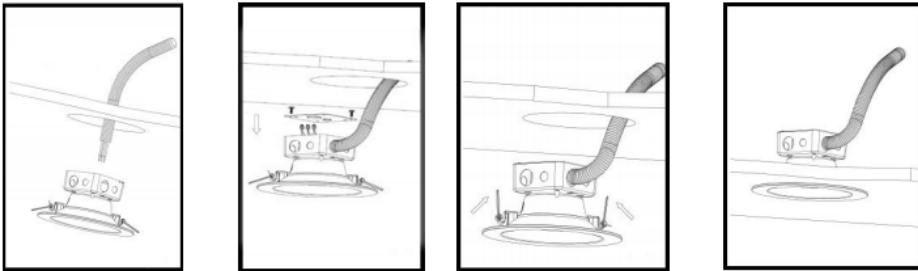
Illuminance at Distance

Height	Illuminance			Beam Diameter
	Edge	Center		
2 ft	55.2 fc	245.8 fc		3.4 ft
4 ft	13.8 fc	61.4 fc		6.7 ft
6 ft	6.1 fc	27.3 fc		10.4 ft
8 ft	3.5 fc	15.4 fc		13.4 ft
10 ft	2.2 fc	9.8 fc		16.8 ft
12 ft	1.5 fc	6.8 fc		20.1 ft

Spacing to Mounting Height Ratio

Spacing Criteria (0-180°)	1.16
Spacing Criteria (90-270°)	1.16
Spacing Criteria (Diagonal)	1.24

Installation



1. Shut off power before installation. Cut a corresponding hole in the ceiling. A template is provided to assist with laying out the hole location. When running the supply wire(s), allow an additional 18 in. of wire at each installation in order to make the electrical connections on the room side of the ceiling hole.
2. Remove the junction box screw(s) holding the junction box cover. Pass the supply wire(s) through the appropriate knockout hole on junction box. Make the electrical connection to fit inside the junction box following the electrical connections. Make sure all connections are secure, tuck all wires inside Junction Box and reinstall junction box cover using junction box screws.
3. Press the top portion of the remodel clips against the side of the housing assembly.
4. Push the housing assembly with the top side of the remodel clips through the hole until tight. Continue to push the housing assembly until the fixture snaps into place with the trim tight against the ceiling surface.