



DECO® | LIGHTING

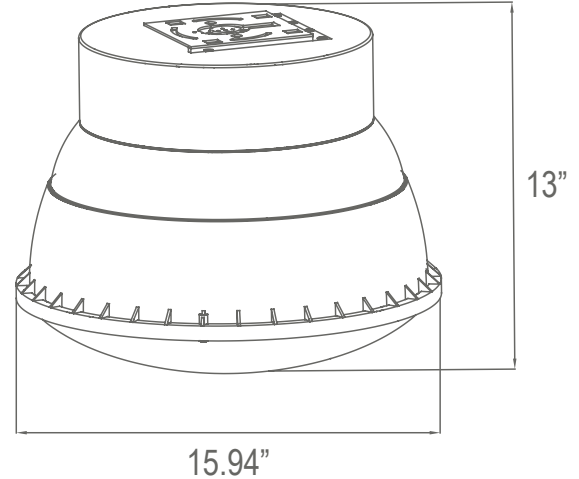
D511-LED

Parking Luminaire



Job Information

Type:	
Catalog #:	
Project:	
Comments:	
Prepared by:	



Description

The D511-LED is a multi-purpose parking luminaire that has been designed to meet the difficult task of eliminating the “cave effect” while providing high quality, uniform, cutoff illumination. U.L. 1598 listed and CSA certified for wet locations. By controlling glare and providing excellent uniformity, the D511-LED improves vehicular movement and pedestrian safety in parking garage facilities.

Ordering Information

Example: (D511-LED-60-50-UNV-SL-PC)



Series	Wattage/Lumen	Color Temp.	Voltage	Finish	Option
Parking Luminaire	20 20W/2478 ³	30 3000K	UNV 122-277V	SL Silver ¹	PC Photocell
	30 30W/3425 ³	35 3500K	347 347V	BZ Bronze	WSF Wired Single Fuse
	40 40W/4371 ³	41 4100K	480 480V	BL Black	WDF Wired Double Fuse
	60 60W/5318 ^{3,5}	50 5000K ^{4,5}	(Step-Down Transformer used for 480V Divider)	WH White ¹	VR Vandal Resistant
				CU Custom ²	WC Wireless Controls
					DM Dimming
					BI Bi Level w/ Motion Sensor ⁴
					SD Step Dimming
					HB Hinged Bracket
					MS Motion Sensor

¹ Standard color for this fixture
² Contact factory for custom finish
³ Delivered Lumens (5000K) (Please see full lumen chart on Page 3)
⁴ Standard Color Temp.
⁵ DLC Listed
⁶ 8ft mounting height lens standard. Contact factory for higher mounting



Deco Lighting practices a program of continuous product development, and as a result product specifications change frequently. We reserve the right to change product specifications without notice. Contact Deco for the latest product information.

©2016 Deco Lighting, www.getdeco.com T: (800) 613-DECO F: (310) 366-6855
 Rev Date: 10/12/16 #2

Digitize your light.®

Features

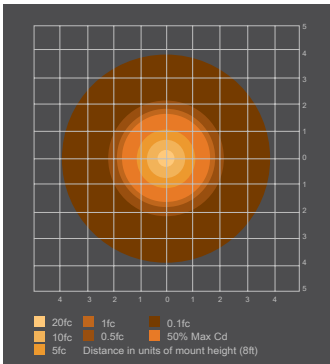
- Supplied galvanized steel rapid mount attachment fits standard J-Box.
- Die-cast aluminum construction houses electrical componentry that are heat sunk for cooler operation and extended component life.
- Uplight window that provides light above the 90° plane for elimination of “cave effect”.
- Continuously sealed silicone gasketing is provided between the electrical, optical housing and housing door, providing a sealed optical environment

impervious to contaminants.

- Provides low glare, cutoff distribution into the drive lane while pushing light into the stall areas.
- Optional wireless controls, occupancy sensors, and dimming is available to further accelerate energy savings.
- Polycarbonate lens is easily removed at three points and is hinged for ease of replamping.

Photometric Data

To see complete photometric reports or download IES files for this product, visit the Deco Lighting D511-LED homepage. Tested in accordance with IESNA-LM-79 and LM80 standards.



Performance Data

CRI:	80+		
CCT:	3000K, 3500K, 4000K, 5000K		
Warranty:	10 yr. Limited Warranty		
Dimming:	Available with 0-10V inputs dimming down to 10%		
Operating Temperature:	0°-65°C Max Ambient		
L70 Rating:	100,000+ Hours		
IP Rating:	IP66		
Drive Current:	350mA		
Power Factor:	0.9378		
Harmonic Distortion (THD):	14.9%		
BUG Rating (60W):	B2	U3	G1

Performance Data

Lumen vs. Ambient Temperature

Use these factors to determine relative lumen output for average ambient temperatures from 0-40°C (32-104°F).

Ambient		Lumen Multiplier
0°C	32°F1	.03
10°C	50°F1	.01
20°C	68°F1	.00
25°C	77°F1	.00
30°C	86°F0	.99
40°C	104°F0	.98

Projected LED Lumen Maintenance

To calculate LLMF, use the lumen maintenance factor that corresponds to the desired number of operating hours below. For other lumen maintenance values, contact factory.

Operating Hours	0	25,000	50,000	60,000	100,000
LM Factor D511-LED-60	1.0.	98	.96.	94	.90

Electrical Load

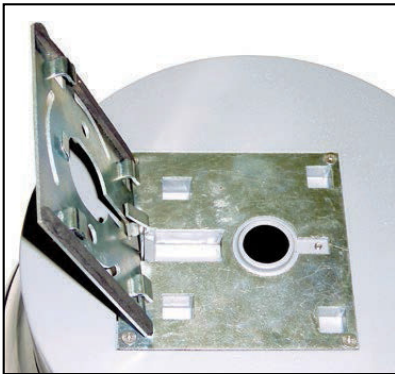
Fixture Model No.	Drive Current (mA)	System Watts	Current (A)			
			1202	08	240	277
D511-LED-60	350 mA	58	0.48	0.28	0.24	0.21

Lumen Chart

Model Number	System Watts	5000K	4000K	3500K	3000K
D511-LED-20	26.18W	2478	2230	2007	1807
D511-LED-30	36.18W	3425	3082	2774	2497
D511-LED-40	46.18W	4371	3934	3541	3187
D511-LED-60	56.18W	5318	4786	4308	3877

*Lumen outputs are based on 5000K performance data and then scaled to the other color temperatures

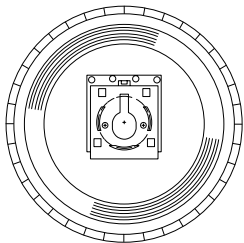
Mounting Bracket Detail



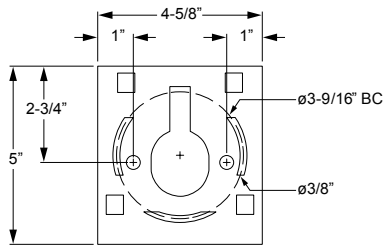
Easy-Hang Bracket fits standard 4" electrical box, allowing one person installation.



Hinged quick-mount bracket, stamped steel, mount over recessed electrical box, or use 3/4" NPS downrod for pendant mounting.



TOP VIEW



EASY-HANG MOUNTING
BRACKET DETAIL

Motion Sensor with Dimming

FSP-211

The FSP-211 mounts in an outdoor lighting fixture and provides multi-level control based on motion. The sensor also includes a photocell to measure the ambient light level. It controls 0-10 VDC LED drivers or dimming ballasts, as well as non-dimming ballasts and with an SFP-LX Lens, is rated for wet and cold locations. All control parameters are adjustable via a wireless configuration tool capable of storing and transmitting sensor profiles.

Key Factors:

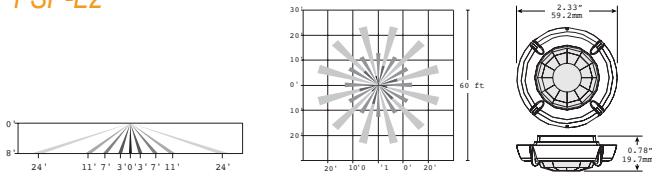
- Full adjustable high and low dimmed light levels.
- Designed for LED fixtures; rated for extreme temperatures and up to 200,000 on/off cycles
- Hold off set point with automatic calibration option for convenience and added energy savings
- Adjustable via hand-held wireless configuration tool
- IP66 rated with choice of lenses for wet and outdoor locations and mounting heights from 8'
- Adjustable time delay and cut off delay



Coverage & Dimensions

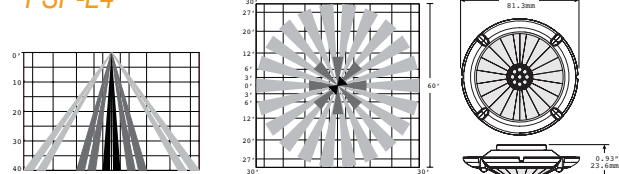
The FS-Lx lenses work with FSP-211 motion sensors to provide multi-level lighting control based on motion and the ambient light level. Four lens choices provide flexibility for varying mounting heights.

FSP-L2



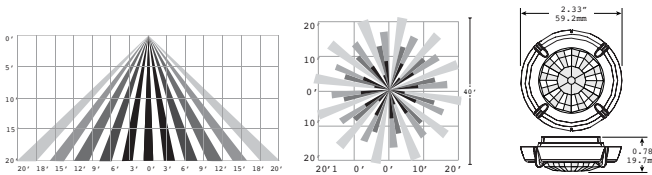
360° lens, maximum coverage 48' diameter from 8' height

FSP-L4



360° lens, maximum coverage 60' diameter from 40' height

FSP-L3



FSP-L7

