



DECO | LIGHTING

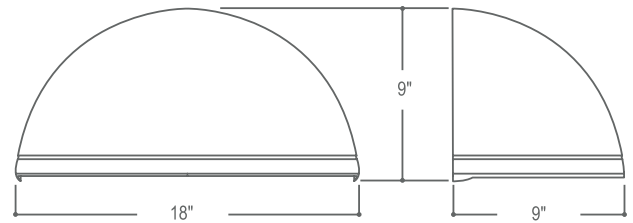
D441-LED

Quarter Sphere Cutoff Wall Pack



Job Information

Type:	
Catalog #:	
Project:	
Comments:	
Prepared by:	



Description

The Quarter Sphere cutoff wall luminaire has a traditional style of spherical form with geometrical symmetry and balance that gives a blended form to complement site design. U.L. Listed and CSA Certified for wet locations in down mount applications and damp locations in up mounted applications.

Features

- Two-piece die-cast aluminum housing.
- Rigid steel mounting attachment fits directly to 4" J-Box or wall for quick installation.
- Die-cast door features 1/8" heat- and impact-resistant clear tempered glass lens.
- Hinged door secured in place via two (2) captive fasteners.
- Durable polyester powder coat finish. Standard color is bronze. Other finish colors available.
- U.L. 1598 listed for wet locations. CSA certified
- Dark Sky compliant.

Ordering Information

Example: (D441-LED-20-50-UNV-T2-BZ-WSF)



Series	Wattage/Lumen	Color Temp.	Voltage	Optics	Finish	Option						
Quarter Sphere Cutoff Wall Pack	20	20W/2560 ^{1,5}	30	3000K	UNV	120-277V	T2	Type II	BZ	Bronze ³	PC	Photocell
	30	30W/3840 ^{1,5}	35	3500K	347	347V	T3	Type III	BL	Black	WSF	Wired Single Fuse
	40	40W/5080 ^{1,5}	40	4000K	480	480V	T4	Type IV	WH	White	WDF	Wired Double Fuse
	60	60W/7620 ^{1,5}	50	5000K ^{4,5,6}		(Step-Down Transformer used for 480V Divider)	T4A	Front Row	CU	Custom ⁴	EMB	Integral Emergency Backup
	80	80W/8120 ¹					T5	Type V				

¹ Initial Delivered Lumens
² Standard Color Temp.
³ Standard color for this fixture
⁴ Contact factory for custom finishes
⁵ DLC Listed

Deco Lighting practices a program of continuous product development, and as a result product specifications change frequently. We reserve the right to change product specifications without notice. Contact Deco for the latest product information.

©2016 Deco Lighting, www.getdeco.com T: (800) 613-DECO F: (310) 366-6855
Rev Date: 11/28/17 #1



Digitize your light.®