



EVIAT-LED

Evian Tube LED Series

Installation Instructions

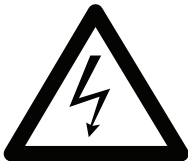


WHEN USING ELECTRICAL EQUIPMENT, BASIC SAFETY PRECAUTIONS SHOULD ALWAYS BE FOLLOWED, INCLUDING THE FOLLOWING:

READ AND FOLLOW ALL SAFETY INSTRUCTIONS

1. Read carefully before installing fixture. Retain for future reference.
2. Make certain power is OFF before starting installation or attempting any maintenance.
3. FAILURE TO FOLLOW INSTRUCTIONS MAY RESULT IN SERIOUS INJURY OR DEATH.

INSTALLATION INSTRUCTIONS



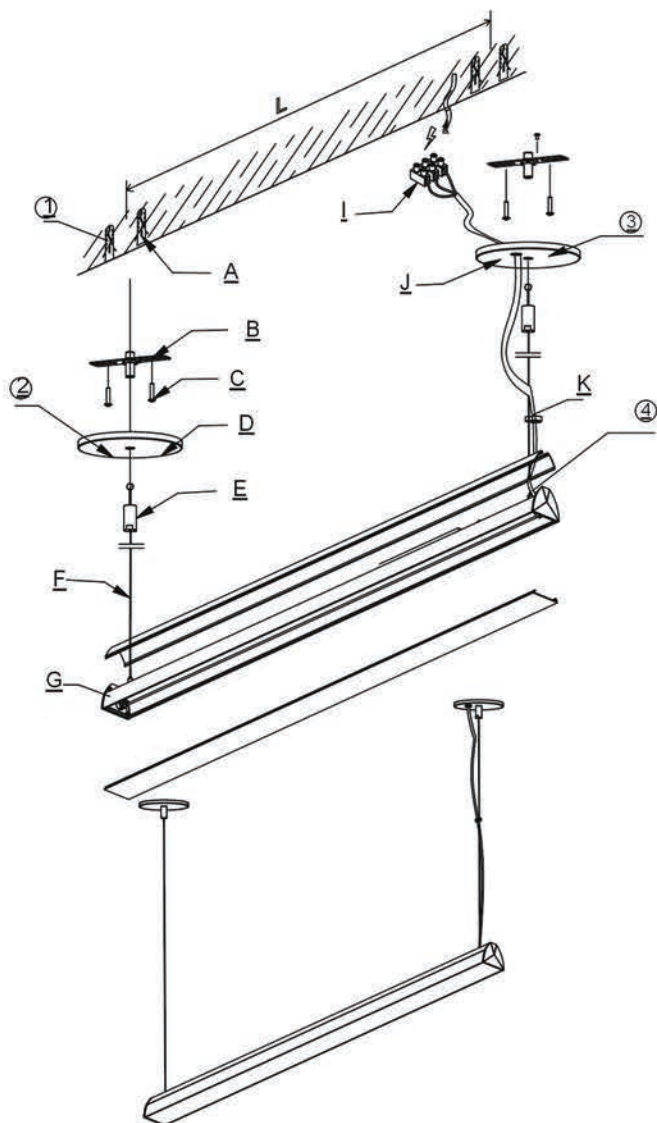
WARNING: TO PREVENT ELECTRICAL SHOCK, TURN OFF ELECTRICITY AT FUSE BOX BEFORE PROCEEDING.

Packing List

Attached table1:Packing list

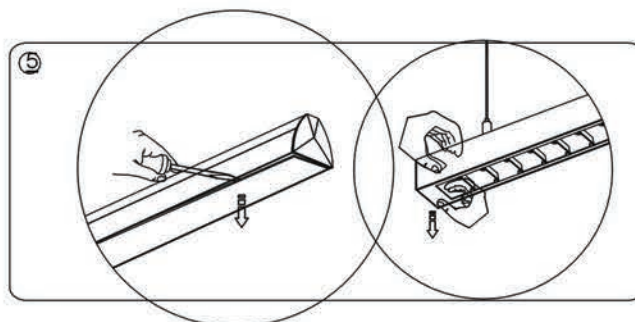
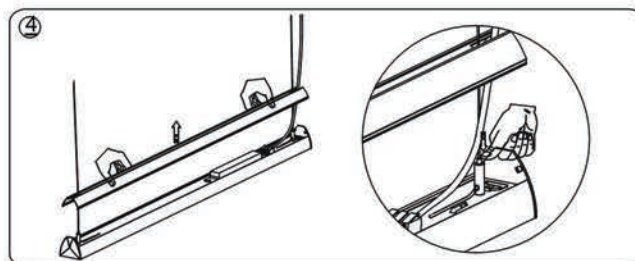
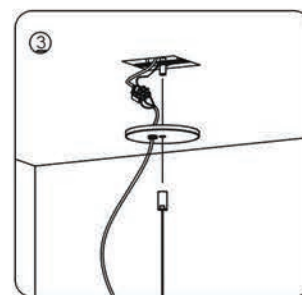
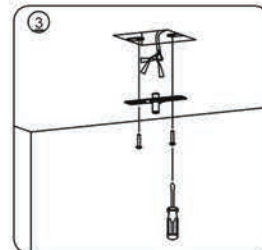
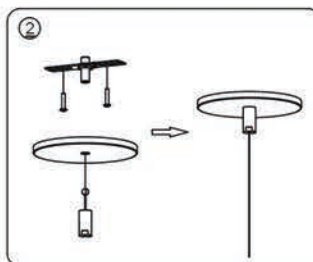
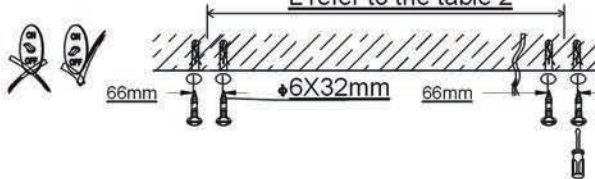
Description			Description		
A	Inflatable screw	4	G	Suspended lamp	1
B	"-shape board	2	H	Tube	2
C	S/T/S	4	I	Plastic termianl	1
D	Flat cover	1	J	125 flat cover (two holes)	1
E	Thread strain pole	2	K	Plastic wire clasp	1
F	Steel wire	2		Installation Introduction	

INSTALLATION INSTRUCTIONS



① Installation mode A: cement/board ceiling

L refer to the table 2



Attached table2:The pendent hole gap installation

Hole gap Power	Model	EVIAT-8-HOUSE	BEAM-8-2-HOUSE BEAM-4-1-HOUSE SPYR-8-2-HOUSE	STRM-8-HOUSE	HYDR-8-2-HOUSE
1×28W		1110mm	1110mm	1110mm	1110mm
2×28W		2302mm	2302mm	2302mm	2302mm
1×35W		1410mm	1410mm	1410mm	1410mm
2×35W		1410mm	970mm	970mm	1455mm
1×54W		1110mm	1110mm	1110mm	1110mm
2×54W		2302mm	2302mm	2302mm	2302mm

DECO Lighting
2917 Vail Ave
Commerce, CA 90040

(800) 613-DECO
Fax: (310) 366-6855
Support: (310) 366-6866

www.getdeco.com


DECO digital[®]
lighting systems