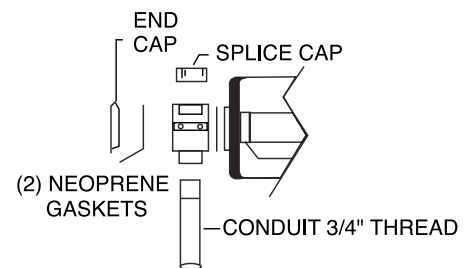
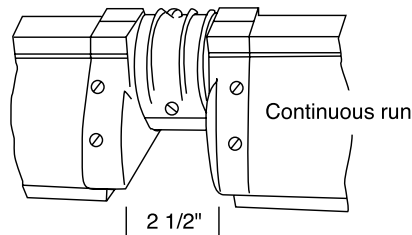
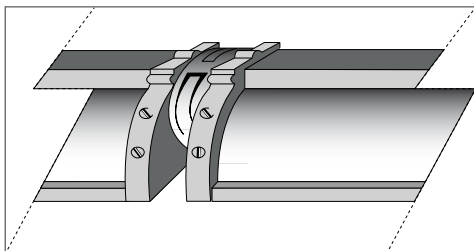


IMPORTANT SAFETY INSTRUCTIONS

1. Read all of these instructions before starting installation.
2. Keep these instructions in a safe place for future reference.
3. Only qualified electricians in accordance with national & local codes should install this product.
4. De-energize electrical circuit at circuit breaker prior to installation process. Do not “hot swap” fixtures. Always ensure power is off before making any changes to installation.

INSTRUCTIONS

1. Installation should be performed by at least 2 people.
2. DECO luminaires may be damaged if connected to conduit systems containing water - Article 300-5G of National Electric Code requires That “Conduits or raceways through which moisture may contact energized live parts shall be sealed or plugged at either or both ends.”
3. Run wire through 3/4” conduit by others. Screw conduit to end cap.
4. Make supply wiring and luminaire wiring connections.
MAIN VOLTAGE SUPPLY WIRE TO BLACK LUMINAIRE WIRE NEUTRAL (COMMON) SUPPLY WIRE TO WHITE LUMINAIRE WIRE
GREEN GROUND WIRE TO GREEN LUMINAIRE WIRE.
5. Attach mounting plate to conduit. Install on surface.
6. In conformance with UL Standard 1598, a silicone based sealant must be used between luminaire and supporting wall.
7. Place a small bead of silicone around the conduit joint.



Mounting Detail Installation Instructions (8' Housing)

Notes:

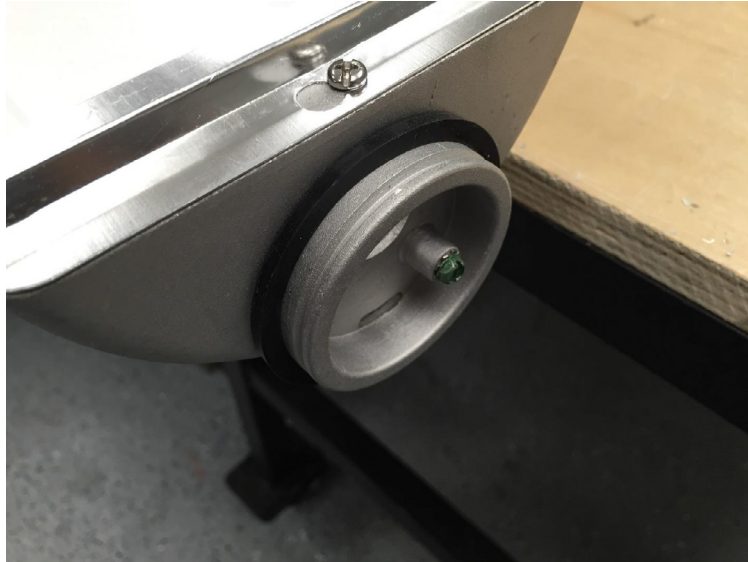
- Cut power to the operating zone before working of fixtures.
- These instructions are to show how to mount the Junction box to the housing(s). For actual installation, the junction box should be screwed into the conduit with the wires run before installing the housing(s).
- Overall Center-to-Center mounting locations should measure 98.5".



Overall housing length (excluding mounting protrusions is 96.25", as shown above.



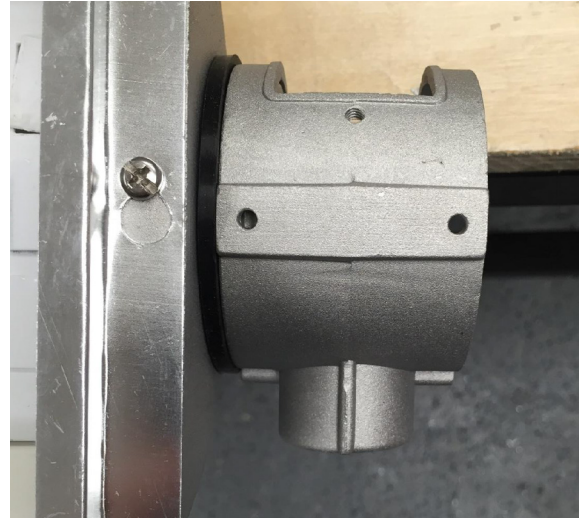
Mounting protrusion extends 0.5" from the edge of the housing, as shown above



Place gasket on the mounting protrusion so that it sits flush against the edge of the housing, as shown above.



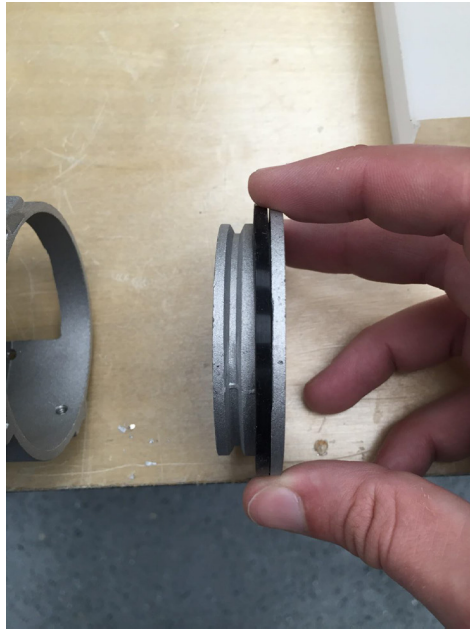
Place gasket on the mounting protrusion so that it sits flush against the edge of the housing, as shown above.



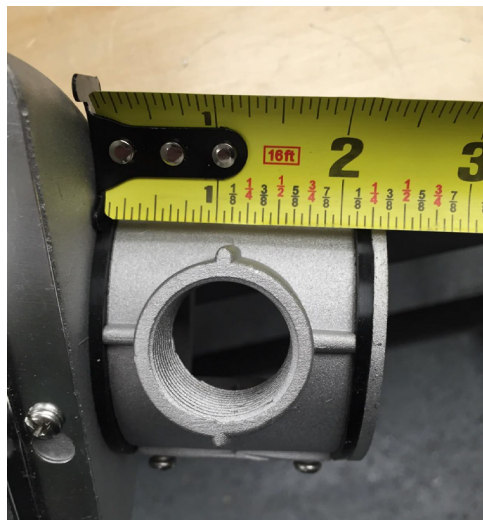
Place the junction box onto the mounting protrusion, as shown above and below.



Fasten the junction box to the housing using two provided #8-32 screws, as shown above.



Place the other gasket onto the mounting protrusion of the end cap (or other housing, if doing a continuous run).

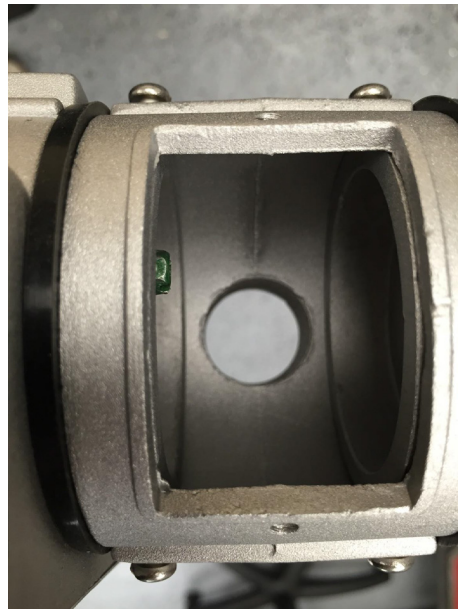


Insert the end cap (or other housing, if doing a continuous run) into the junction box, and tighten with two additional provided #8-32 screws.

The distance from the end of the housing to the inside surface of the end cap (or end of other housing, if doing a continuous run) should measure 2.25", as shown above.



Junction box hole cover.



Exposed aperture of the junction box, to make necessary connections.



Place the junction box hole cover so that it covers the exposed aperture of the junction box, and fasten into place with two more provided #8-32 screws.
Your assembly is now complete.